

VDOT STATE TRAILS OFFICE

STATE TRAILS ADVISORY COMMITTEE MEETING

Ross Tepe

State Trails Program Manager

Local Assistance Division

Cassi Patterson

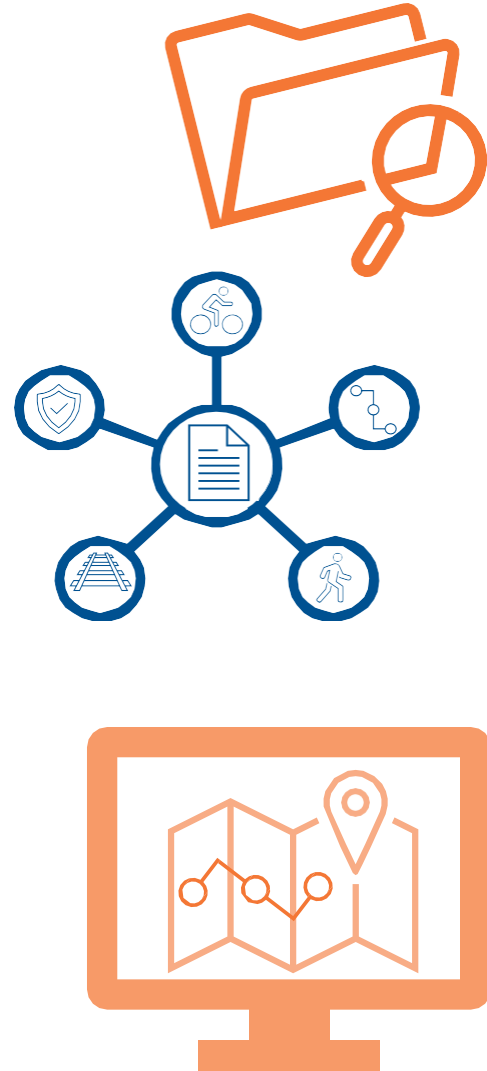
State Trails Program Coordinator

Local Assistance Division

April 28, 2026

What is the State Trails Office?

- **The State Trails Office (STO) was established in January 2023 through a 2022 General Assembly budget amendment**
- **Key initiatives included:**
 - **Develop a State Trails Plan**
 - Establish an Information Clearinghouse / Resource Hub
 - Create a Trail Type and Surface Selection Guide
- **The General Assembly designated funding for priority trails**



Statewide Multiuse Trails Plan

Goal:

"To provide a framework for development of a statewide system of connected trail networks across the Commonwealth and increase trail access for residents and visitors of Virginia."



Statewide Multiuse Trails Plan Overview

Developed in a phased approach:

- **Phase 1**
 - Public outreach and engagement
 - Data collection and methodology
 - State of the existing and planned multiuse trails system
 - Needs assessment
- **Phase 2**
 - Data cleaning and preparation
 - Descriptive elements analysis
 - Results
 - Case studies
 - Next steps



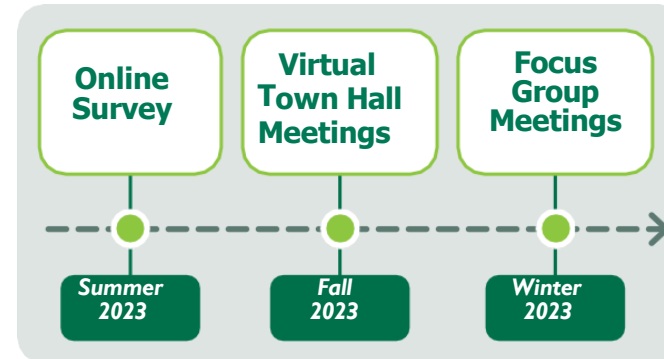
Phase 1 Public Outreach and Engagement

Public Outreach Objectives:

- Understand how residents currently use multiuse trails
- Understand barriers to using multiuse trails
- Understand desires for existing and future multiuse trails

Engagement Methods:

- Online survey
- Virtual town hall meetings
- Focus groups



Phase 1 Public Outreach and Engagement

State Trails Office Advisory Committee:

- Established to help guide the public engagement process, validate the planning process, provide feedback, and promote events across networks
- Included representatives of the following organizations:



Public Outreach and Engagement Outcomes

Public Engagement Takeaways:

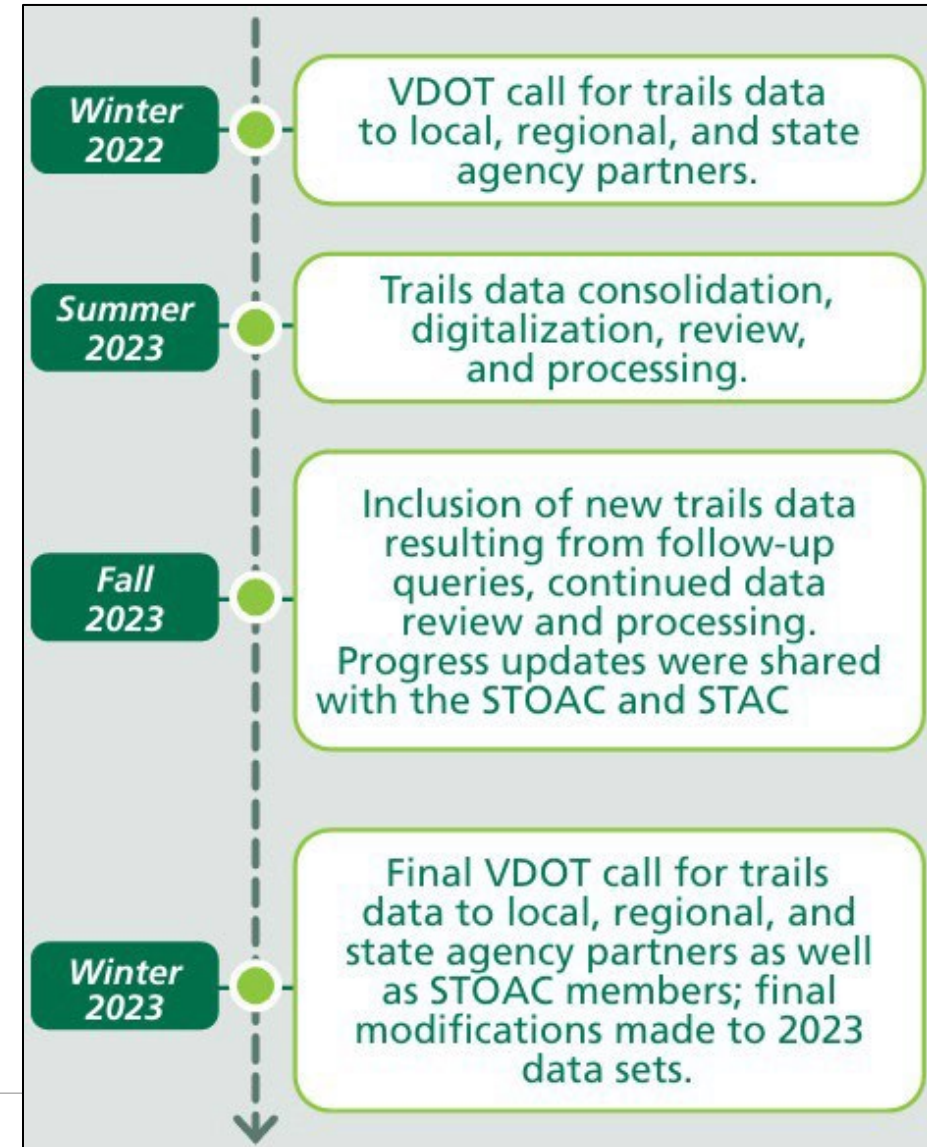
- **Access is the most consistent barrier and desire**
 - Residents want multiuse trails closer to home and connected to everyday destinations
- **Safety concerns**
 - Road-crossing conflicts at intersections
 - Varying modes and speed conflicts on shared use paths
- **Strong desire for trails that provide utility**
 - Access to workplaces, services, recreation, and transit and not just recreation



Public Outreach and Engagement Outcomes

Methodology:

- Data was drawn from approved local and regional plans, including active transportation, bike/ped, trails, and greenway plans.
- Partners were asked to provide key attributes such as name, type, owner, surface, status, and locality.



Data Collection and Methodology

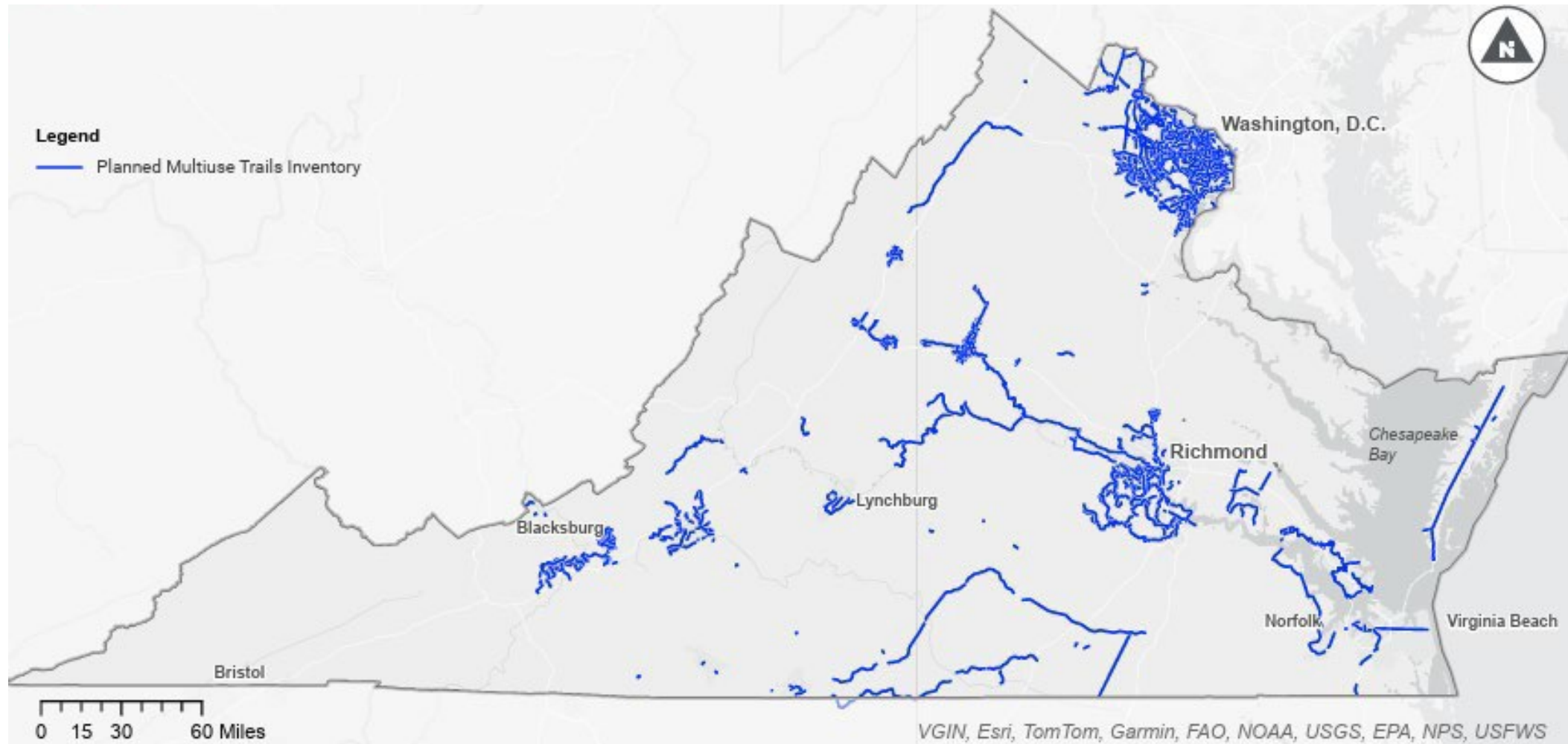
Coordination and Outcomes:

- The 2023 effort underscored the need for a **standardized statewide trails data schema** to ensure accurate, efficient data updates.
- The 2023 trail inventory compiled nearly all available statewide trail data, with only 24 jurisdictions lacking data.
- The data collection efforts compiled over **1,500 miles of existing multiuse trails** and over **2,900 miles of planned multiuse trails**.
- The existing and planned multiuse trails share four core traits
 - Multimodal
 - Safe
 - Accessible
 - Regionally connected



Data Collection and Methodology

Planned Multiuse Trails Inventory:



State of the Multiuse Trails System

Statewide indicators of how the existing and planned multiuse trails serves Virginians:

- **Indicators draw from four datasets:**
 - **Population density (American Community Survey (ACS) 2021)**
 - **Disadvantaged communities (USDOT/Justice40 + ACS 2021)**
 - **Job density (Longitudinal Employer-Household Dynamics (LEHD) 2021)**
 - **VDOT safety priority corridors (Pedestrian Safety Action Plan (PSAP) top 1% crash-risk corridors, 2016–2020)**

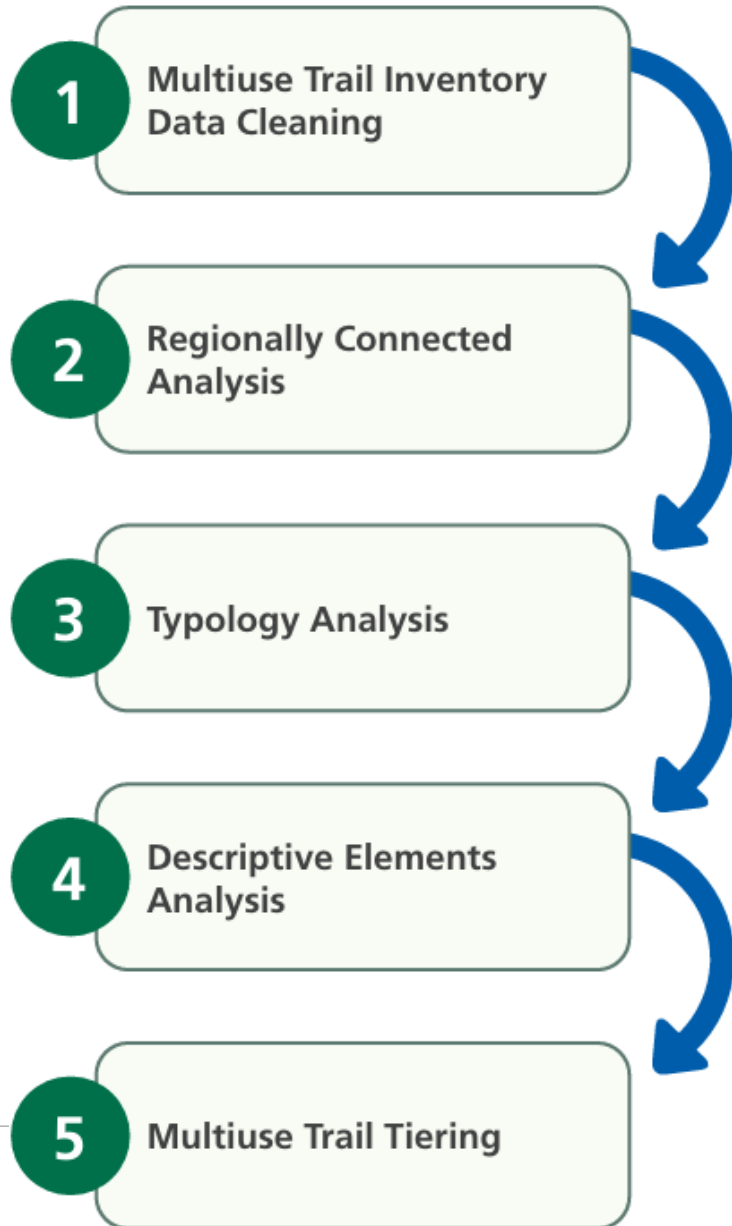


State of the Multiuse Trails System

Indicator	Metric	Statewide Total	Existing Multiuse Trails	Percent within Buffer	Planned Multiuse Trails	Increase	Existing and Planned Multiuse Trails	Percent Within Buffer
Population	People within a half-mile buffer	8,582,479	3,098,094	36.10%	3,325,544	1,217,477	4,315,571	50.28%
Underserved Communities	People in Justice40 census tracts within a half-mile buffer	1,920,205	381,005	19.84%	556,580	325,769	706,774	36.81%
Employment	Jobs within a half-mile buffer	3,635,927	1,746,212	48.03%	1,825,358	519,115	2,265,327	62.30%
Safety	Miles of statewide priority corridors within a half-mile buffer	4,281	2,393	55.91%	2,368	651	3,044	71.12%



State Multiuse Trails Plan - Phase 2 Overview



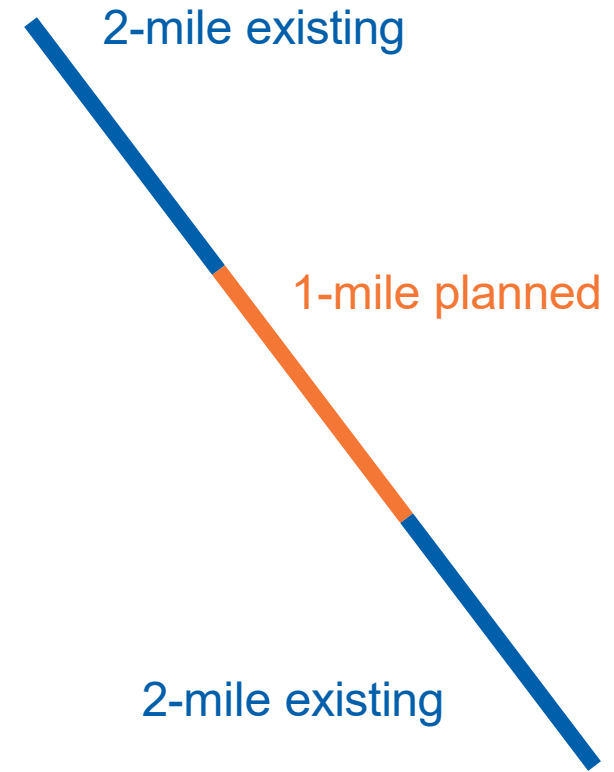
Phase 2 Data Details:

- Phase 2 yielded a more robust dataset of the statewide multiuse trail network, including a preliminary understanding of how individual trails provide potential access and connectivity to a broad range of key destinations and other multimodal facilities.

Regionally Connected – Join by Distance

- Spatial analysis was conducted to identify planned trails that extend or fill the gaps in the existing trail network (0.1 miles distance)
- Length of these combined segments were calculated
- 3-mile threshold applied for trail segment to be regionally connected

Example: A 1-mile trail that bridges a gap between two 2-mile trails could be considered 5 miles in total length



Phase 2 Trails Data Analysis

Element	Data Source	Join Distance: High-Density	Join Distance: Low-Distance	Scoring	Notes
Landmarks	VGIN landmarks data (government facilities, libraries)	0.25 miles	0.5 miles	Number of landmarks within set distance of each trail, shown as whole number.	Users are more likely to use trails for commuting or routine travel if located within a 10-minute walk in urban areas or 20-minute walk in rural areas.
Schools	VGIN landmarks data (filtered to schools) and National Center for Education Statistics (NCES)	0.25 miles	0.5 miles	Number of public and private schools within set distance of each trail, shown as whole number.	Users are more likely to use trails for commuting or routine travel if located within a 10-minute walk in urban areas or 20-minute walk in rural areas.
Transit Stops	Open-source transit data (DRPT GTFS, Open Street Map)	0.5 miles	1 mile	Number of transit stops within set distance of each trail, shown as whole number.	Users are generally willing to travel farther off-trail to reach transit stops than amenities.
On-Road Bicycle Facilities	VDOT on-road bicycle facilities inventory (designated bike lanes)	500 feet (~0.1mile)	500 feet (~0.1mile)	Total miles of on-road bicycle facilities within set distance of each trail.	Trails can serve as connectors to on-road bicycle facilities.
U.S. and State Bicycle Routes	AASHTO, VDOT maintained bicycle routes, National Park Service	0.5 miles	0.5 miles	Total miles of U.S. and State bicycle routes within set distance of each trail.	Trails can serve as connectors along national U.S. and State bicycle routes.
Pedestrian and Bicyclist Safety Action	VDOT	500-foot buffer (~0.1mile)	500-foot buffer (~0.1mile)	Total miles of trail that is within set distance of PBSAP facilities that are parallel to regional trails	Trails can serve as alternative travel options along corridors with significant bicycle and pedestrian safety needs, functioning more as replacements than as connections.
Parks	Trust For Public Land (Complete U.S. Park-Serve® Dataset)	0.25 miles	0.5 miles	Total park acreage within a set distance from each trail, shown in acres	The methodology scores park access for both high- and low-density trail typologies, giving trails credit based on the park acreage they connect.

State Multiuse Trails Plan Phase 2

Trail Sta... All Existing Planned

Scoring ... All
Landmarks S... 0 - 100
School Density S... 0 - 100
PBSAP Sc... 0 - 100
Park Acreage S... 0 - 100
Transit Sc... 0 - 100
Bike Facilities S... 0 - 100
Typology Both
Regional Trail Crit... No category selec...

This dashboard maps the planned and existing trails dataset used for Phase 2 of the VDOT State Trails Office's State Trails Plan.

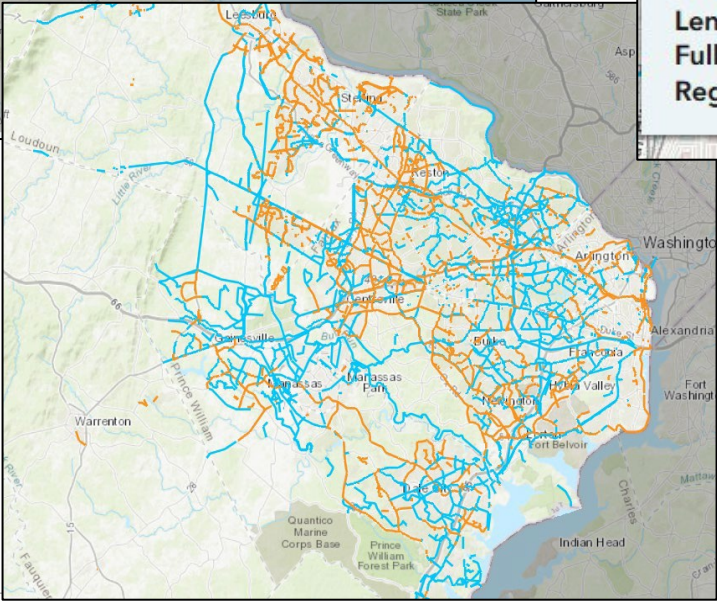
The dataset was analyzed to measure how both existing and planned multiuse trails connect to schools, parks, transit stops, landmarks, and existing bike/pedestrian routes, as well as a trails location relative to PBSAP corridors. Each trail segment was scored for its overall connectivity, with adjustments to make comparisons fair across different trail lengths.

Use the category filters along the top row to explore the dataset by these scores. Filters let you see how individual trail segments performed in the descriptive elements analysis, helping identify where trails already provide strong connections and where new opportunities could improve access, safety, and mobility. Existing trails are shown in orange and planned trails are shown in blue.

*This dataset reflects information compiled in 2023 and may not include all existing or planned trail projects. It is intended to complement and support ongoing trail

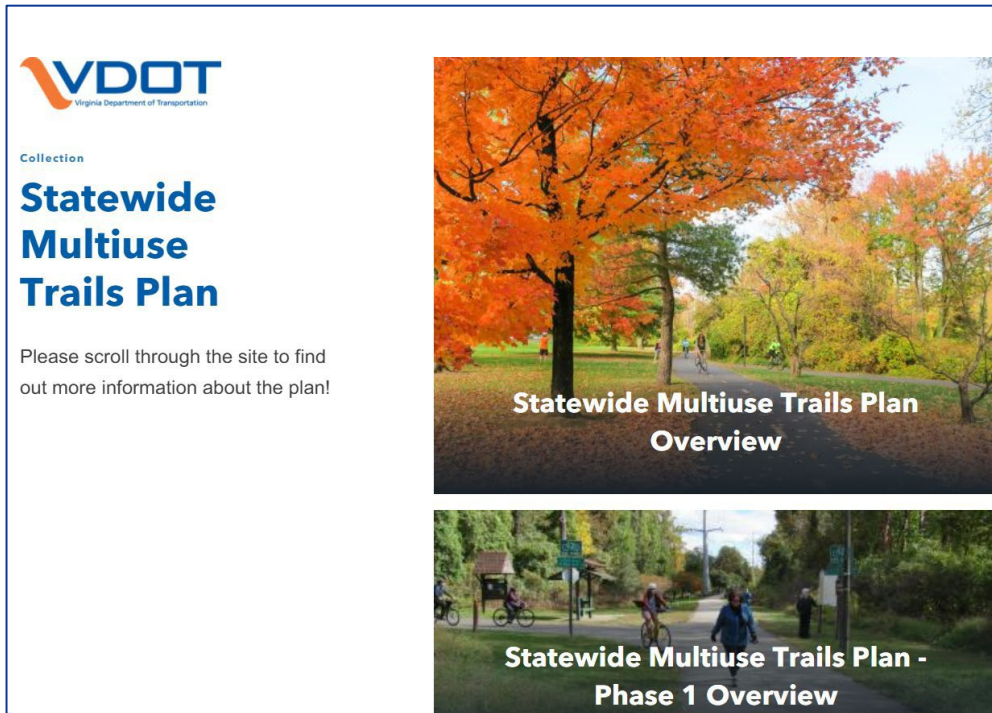
Planned trail: S Van Dorn Street

Trail Name: S Van Dorn Street
Existing or Planned? Planned
Overall Score: 96.20
Landmarks Connectivity Score: 77.50
School Connectivity Score: 81.60
PBSAP Overlap Score: 91.60
Park Acreage Score: 0.00
Transit Connectivity Score: 63.80
Bike Facility Connectivity Score: 97.00
Length: 0.65 miles
Full Dataset Tier: Top
Regional Trails Tier: N/A



Statewide Multiuse Trails Plan deliverables

PDF version and interactive ArcGIS StoryMap version



Planned Multiuse Trails inventory refresh



Plan Partners and Advocates

Thank you!



Transportation and Mobility Planning Division

State Trails Office Local Assistance Division

Ross Tepe

State Trails Program Manager

VDOT Local Assistance Division

Cassi Patterson

State Trails Program Coordinator

VDOT Local Assistance Division

Shane Sawyer

Active Transportation Planning
Manager

VDOT TMPD

Jake Helmboldt

Planning Specialist Sr

VDOT TMPD

David Cook

Statewide Bicycle and Pedestrian
Planner

VDOT TMPD

Contact Us:

Website: vdot.virginia.gov/trails

Contact the State Trails Office: statetrailsoffice@vdot.virginia.gov

Ross.Tepe@vdot.virginia.gov

Cassandra.Patterson@vdot.virginia.gov

